



KFU
جامعة الملك فيصل
KING FAISAL UNIVERSITY
University and a Nation...Prosperity...Sustainability

Sustainability Report 2021

Report Contents

- 1 Rector's welcome
- 2 Key Facts about KFU 2021
- 3 Sustainable Development Goals (SDGs) at **King Faisal University**





Dr. Mohammed bin Abdul Aziz Al-Ohali

Rector's Welcome

King Faisal University abounds with multiple resources that enable it to excel and pioneer at the national and regional levels in a way that befits the university's ancient history and its long heritage of giving. As we experience this huge transformation in our national development process, the time has come to invest and build on these multiple resources to ascend with the university's aspirations to broader horizons based on its platforms of well-established scientific structure and lofty research institutions. With our ambitious vision - we at King Faisal University have determined to contribute in solving challenges facing the world associated with food security and environmental sustainability that are aligned with the United Nation Sustainable Development Goals. We focus on achieving these goals through our core operations by improving the teaching, learning and scientific research processes, strengthening our community partnerships, and establishing our innovation and business development sector. I am fully confident that during the next few years, the university will achieve more gains and will have a great effect on the internal and external communities. I am also sure that the university has sufficient flexibility and qualified human capabilities that cope with future changes and developments enabling us to amend our plans accordingly. It is my pleasure to put in your hands some of KFU effort towards achieving the sustainable development goals.



KFU

جامعة الملك فيصل
KING FAISAL UNIVERSITY
University and a Nation...Prosperity...Sustainability



Key Facts about KFU 2021

15 Colleges

Agricultural and Food Sciences

Veterinary Medicine

Education

Business Administration

Medicine

Law

Community in Abqaiq

Dentistry

Science

Computer Sciences & Information Technology

Clinical Pharmacy

Engineering

Applied Medical Sciences

Arts

Applied Studies & Community Service

3660 University Employees

582 International Students

29628 Students

6525 Graduate Students

1,958,635 m2 Total Building

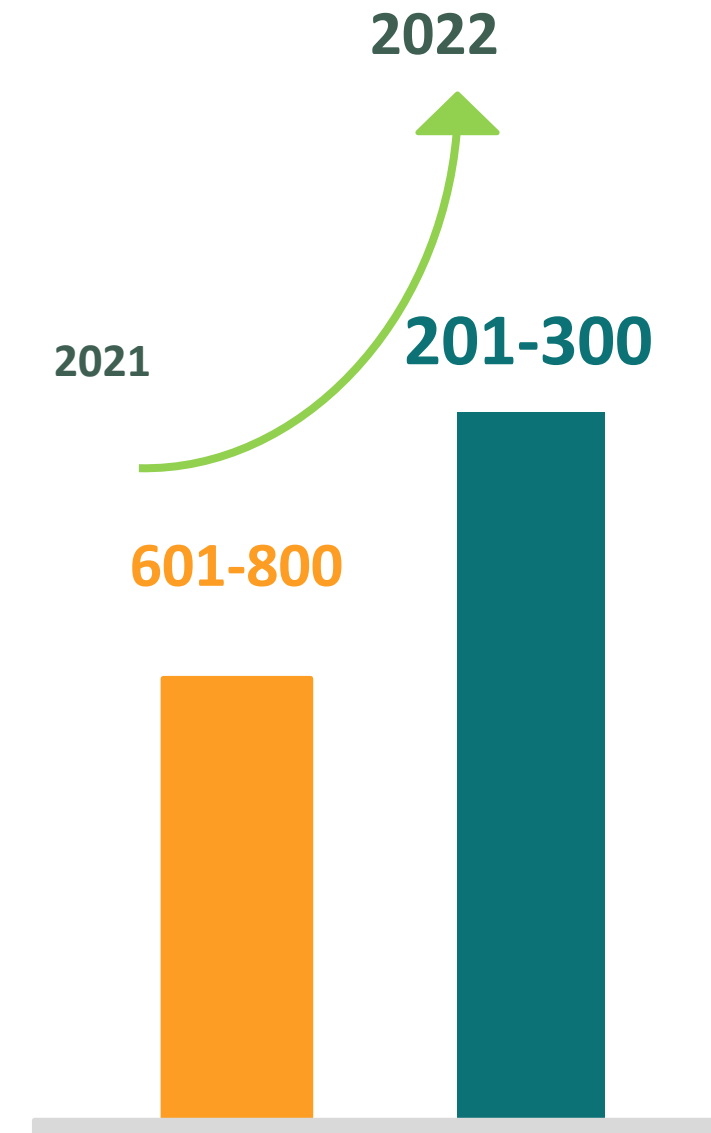
International Students



King Faisal University Performance

THE Impact Rankings 2022

Out of 1410 institutions, KFU was
ranked as **201-300th** internationally



King Faisal University Performance

THE Impact Rankings 2022



Green Metric Ranking

The university ranked as the 221st world's most sustainability university in 2021 UI GreenMetric World University Ranking

World Ranking
221

164



Setting and
Infrastructure

262



Energy
and Climate
Change

371



Waste

198



Water

305



Transportation

193



Education



The 17 Sustainable Development Goals (SDGs)





GOAL #1

NO POVERTY

end poverty in all its forms
for everyone, for **good!**



**GOAL #1****NO POVERTY**

KFU is committed to provide assistance to local start-ups businesses and plays a pioneering role in collaboration with different local institutions, like Monsha'at and the Saudi Authority for Intellectual Property, through organizing workshops, seminars, lectures covering a variety of business and entrepreneurship areas, such as digital marketing, cyber security, and venture capital. Through its business incubator, **KFU** helps start-up companies and entrepreneurs to develop their businesses by providing them with training services as well as financial support, in addition to allocating facilities in order to connect entrepreneurs with funding institutions.

Through the Student Fund, **King Faisal University** seeks to support low-income students by providing them with financial stability. The Student Fund provides financial aid and loans to students. It also provides financial support to students through the Student Employment Program, which aims at refining the various skills of students. The aids include housing, food, transportation services, and financial fund.

The scholarships are divided into two parts:

Internal scholarships for students from inside the Kingdom.

External scholarships from outside the Kingdom of Saudi Arabia.

Scholarships Statistics for year 2021 :

Social Security students: **344 graduates**

charitable societies students: **69 graduates**





GOAL #1

NO POVERTY

The **KFU** business incubator incubates pioneering projects and ideas provided by university employees or from outside, as well as research outputs. The incubator aims to develop these projects and transform them into start-up companies by providing free advisory and guidance services to those companies, in addition to providing training programs, workshops and free work facilities. The duration of the incubator is six months and convened annually





2 ZERO HUNGER

GOAL #2

NO HUNGER

End **hunger**, achieve food security and improved nutrition and promote **sustainable** agriculture



2 ZERO HUNGER

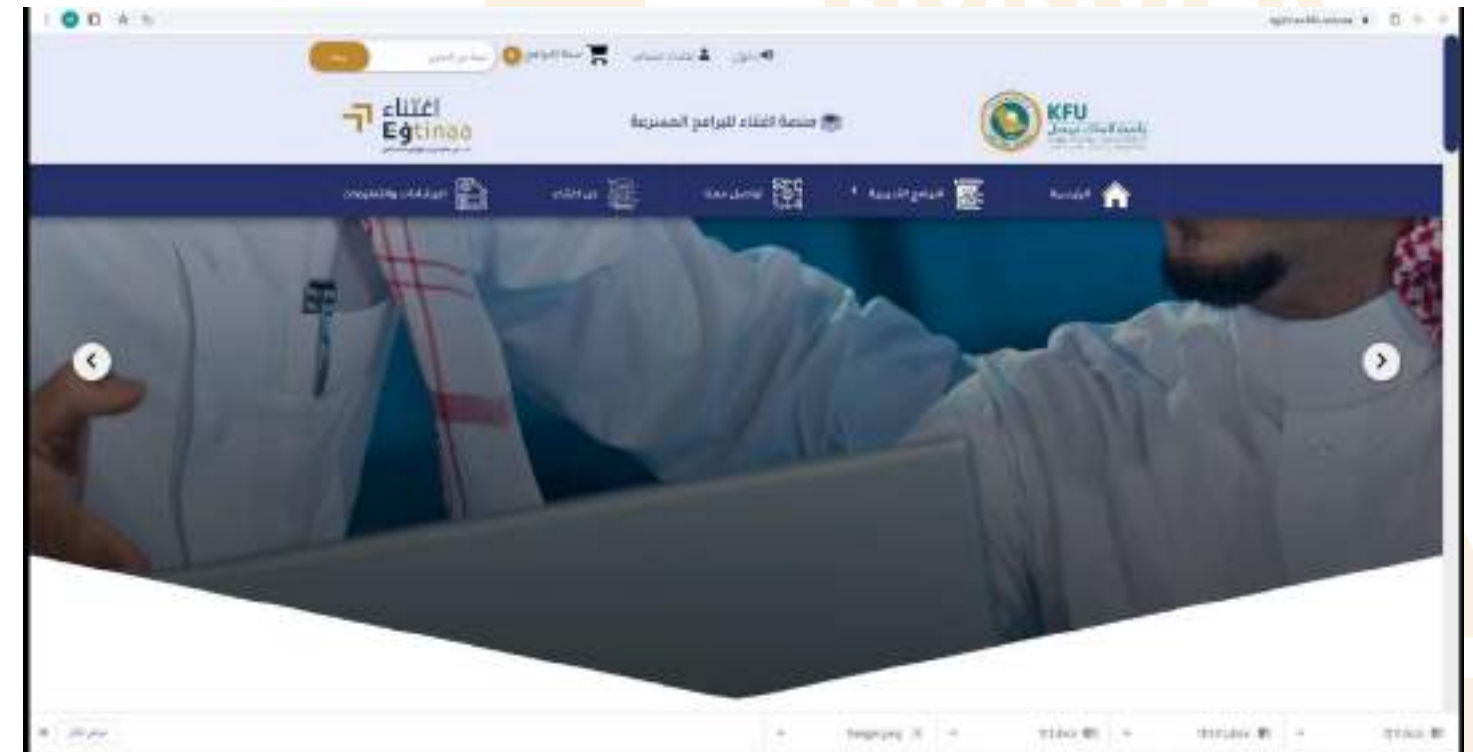


GOAL #2 NO HUNGER

King Faisal University has launched an unprecedented institutional identity, where its strategic option is the contribution to achieving food security and environmental sustainability for the Kingdom of Saudi Arabia. The adoption of food security significantly impacted the whole university. Within a year, several remarkable achievements have been accomplished. one of the achievements is coming up with some sustainable food products. As Date Palm is one of the main local agricultural crops, it was smartly used to produce several products as part of enhancing food security at the national level.

The Nutrition Unit at **KFU** participates in providing food service to support all KFU's students and faculty where there are three meals are served daily (breakfast - lunch - dinner) in the university's Cafeterias.

KFU innovated and developed an educational platform, (Ightina platform), to design and provide long and short educational programs for those wishing to enrich their knowledge and meet the increasing needs for professional development and career growth in all fields, especially areas related to emerging disciplines and emerging technology, and presenting them through advanced interactive and easy-to-use technical windows. Including, biotechnology and medicinal plants programs.



2 ZERO HUNGER



GOAL #2 NO HUNGER

KFU have many laboratories and hospitals devoted to serving the community, farmers, and animal breeders, including the veterinary hospital, which includes many laboratories in addition to a central laboratory for disease diagnosis, and to provide accurate technical advice in the field of diagnosing animal diseases in the Kingdom and the Gulf region.

The university also includes a research and training station that provides different services to the community in the agricultural and animal fields

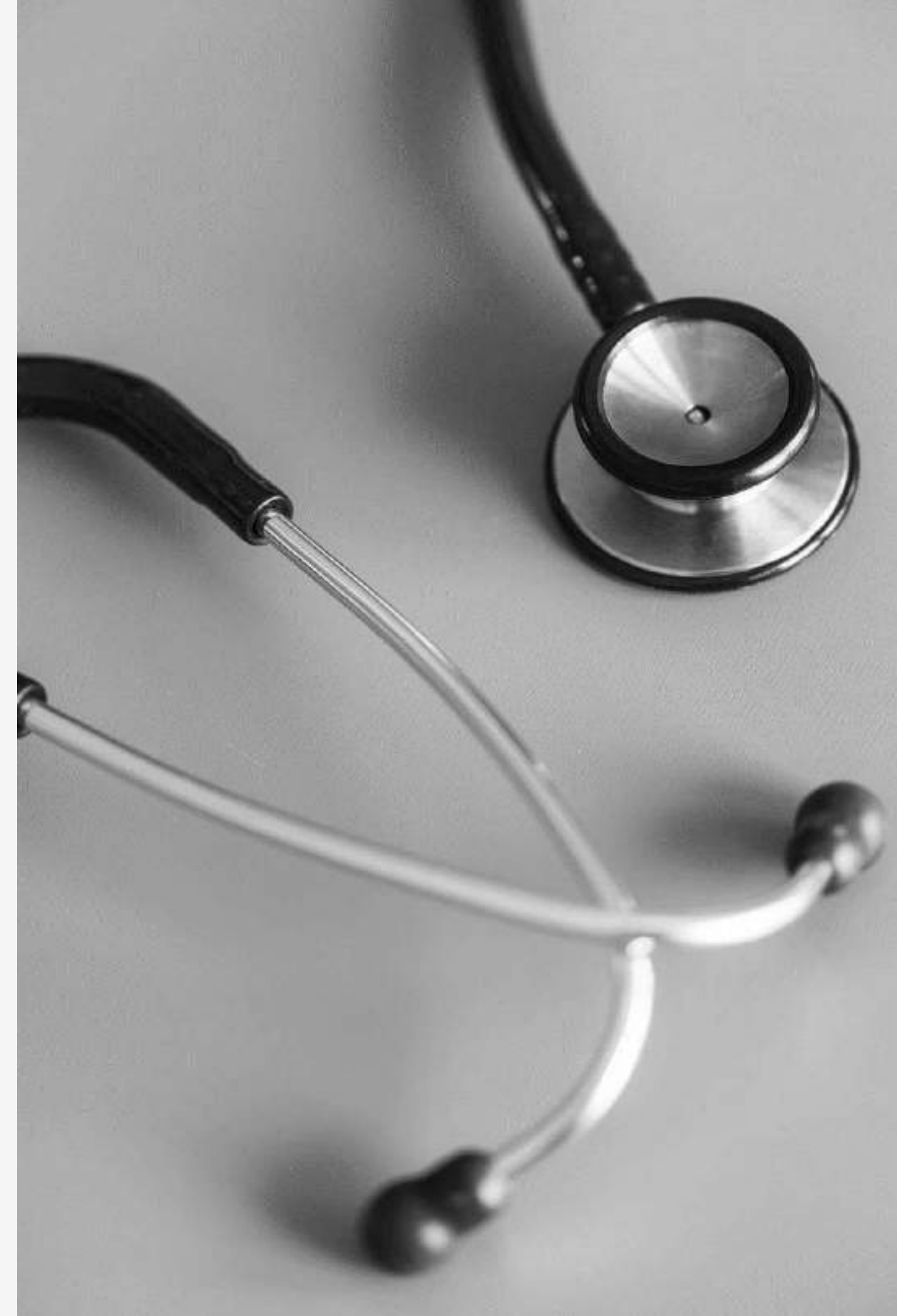




GOAL #3

GOOD HEALTH AND WELL-BEING

Ensure **healthy** lives and promote
well-being for all at all ages



GOOD HEALTH AND WELL-BEING

3 GOOD HEALTH AND WELL-BEING

GOAL #3
GOOD HEALTH AND WELL-BEING

KFU has several local, national and international collaborations with various health institutions to improve health & welfare for the community.

KFU is keen to promote and improve human health including hygiene, nutrition, family planning, sports, exercise, health of elderly people, and other aspects of health and welfare for the local community by disseminating outreach programs and projects. KFU shares its sports facilities with the local community and organizes events and exhibitions within the campus for all.

By the Guidance and Counseling Unit, KFU provides many developmental, preventive and health guidance services, academically, educationally, socially, psychologically and professionally.





GOAL #4

QUALITY EDUCATION

Ensure inclusive and **equitable quality education** and promote lifelong learning opportunities **for all**



4 QUALITY EDUCATION



GOAL #4 QUALITY EDUCATION

Teaching

At **KFU**, we believe that community engagement is a key role of the university. One of the services that we provide to the community is education in all its shapes and forms. We exploit our highly qualified human resources to teach and train people who are not attending the university in all different disciplines. The aspiration of quality education in all academic programs at **KFU** is clarified in their mission and goals. Some key features of **KFU** academic programs that demonstrate the quality of education are: Providing students with professional, employability, and personal knowledge and competence for effective contribution to the local community. The “futuristic education” mission component of **KFU** has framed teaching future-ready skills that employers want and need. Learning and teaching methodologies that are research driven and have significant practical community and service learning integration. Methodologies are fostered such as the PBL and service learning of the medical programs, the cooperative training of the computer science, business, science, agriculture and education programs and the use of full digital technologies in delivery approaches across programs. Providing faculty with trainings relevant to teaching and seminars to broaden their content expertise relevant to teaching.

Connecting with focus industries to expand educational access and opportunities. All academic programs have collaborations with industry sectors which provide avenue for transformation of learning in classroom to learning in workplace. Seeking local and international accreditation for comparability and reputation.

جامعة الملك فيصل
KING FAISAL UNIVERSITY

المؤسسة العامة للتعليم
الجامعي

بالتعاون مع المؤسسة العامة للتعليم
عن إطلاق برنامج تدريب لأصحاب المزارع السياحية

"برنامج الريادة في المزارع السياحية"

يهدف البرنامج إلى دعم أصحاب المزارع السياحية في مدينة الأحساء من خلال تقديم ورش عمل وجلسات إرشادية في الإدارة والسياحة والتسويق السياحي والرقمي وذلك للإسهام في تنمية المزارع وتعزيز دورها كواجهة سياحية.

جدول البرنامج

- التسويق الرقمي
- تسويق المزارع سياحياً
- السياحة الزراعية والريفية

الأربعاء 22 ديسمبر 2021
الساعة 09:00 صباحاً إلى 01:00 مساءً

للتنسجيل في البرنامج

مركز الابتكار وريادة الأعمال | @kfufu | kfufu.edu.sa

جامعة الملك فيصل
KING FAISAL UNIVERSITY

المؤسسة العامة للتعليم
الجامعي

بمناسبة الأسبوع العالمي لريادة الأعمال تقدم ريادة
بالشراكة مع مركز الابتكار وريادة الأعمال بجامعة الملك فيصل

#معسكر ريادة لتطوير مهارات رواد الأعمال بالأحساء

رابطه التنسجيل

القاعة المستهدفة

- رواد الأعمال
- رائدات الأعمال
- المهنيين بريادة الأعمال

2021/11/22
من 9:00 م
جامعة الملك فيصل (الحدائق)

بريد إلكتروني: kfufu.edu.sa | @kfufu



GOAL #4

QUALITY EDUCATION

KFU has established a new center - the Center for Students' Excellence- as a key component of the university's strategic plan to support and ensure students' success in their academic life as well as their campus experience. Academic training, management of personal problems, career goals, providing advice, health seminars, supplemental instructions for students on supervision and professional consultancy in research, projects, developing strategies for reading, writing, studying, taking exams, time management, success seminars, trainings and involvement in various academic learning communities are they key support activities. Distinguished and talented students who are also highly engaged as leaders of academic learning groups. It is just the beginning and we have started to harvest the outstanding results, the center has successfully minimized first year retention rate, improved academic performance and the overall graduation rate across colleges.

The university enables free access to educational resources for people who do not study at the university, including libraries that are open to all in all times. The innovation and Business Development Sector at the university prepares a set of different programs, which are as customized programs or as part of the programs implemented. The Pioneer Camp develops the skills of entrepreneurs in Al-Ahsa and the leadership program in tourist farms.

KFU undertakes many educational outreach activities and community initiatives. A cooperation agreement between the Hamasat Culture Center and King Faisal University in Al-Ahsa to direct the intellectual, practical and artistic energy of young men and women, and provide educational programs and activities aimed at achieving comprehensive development, enhancing the role of women in society, consolidating awareness of active and effective community participation, and integrating the community in volunteer work.



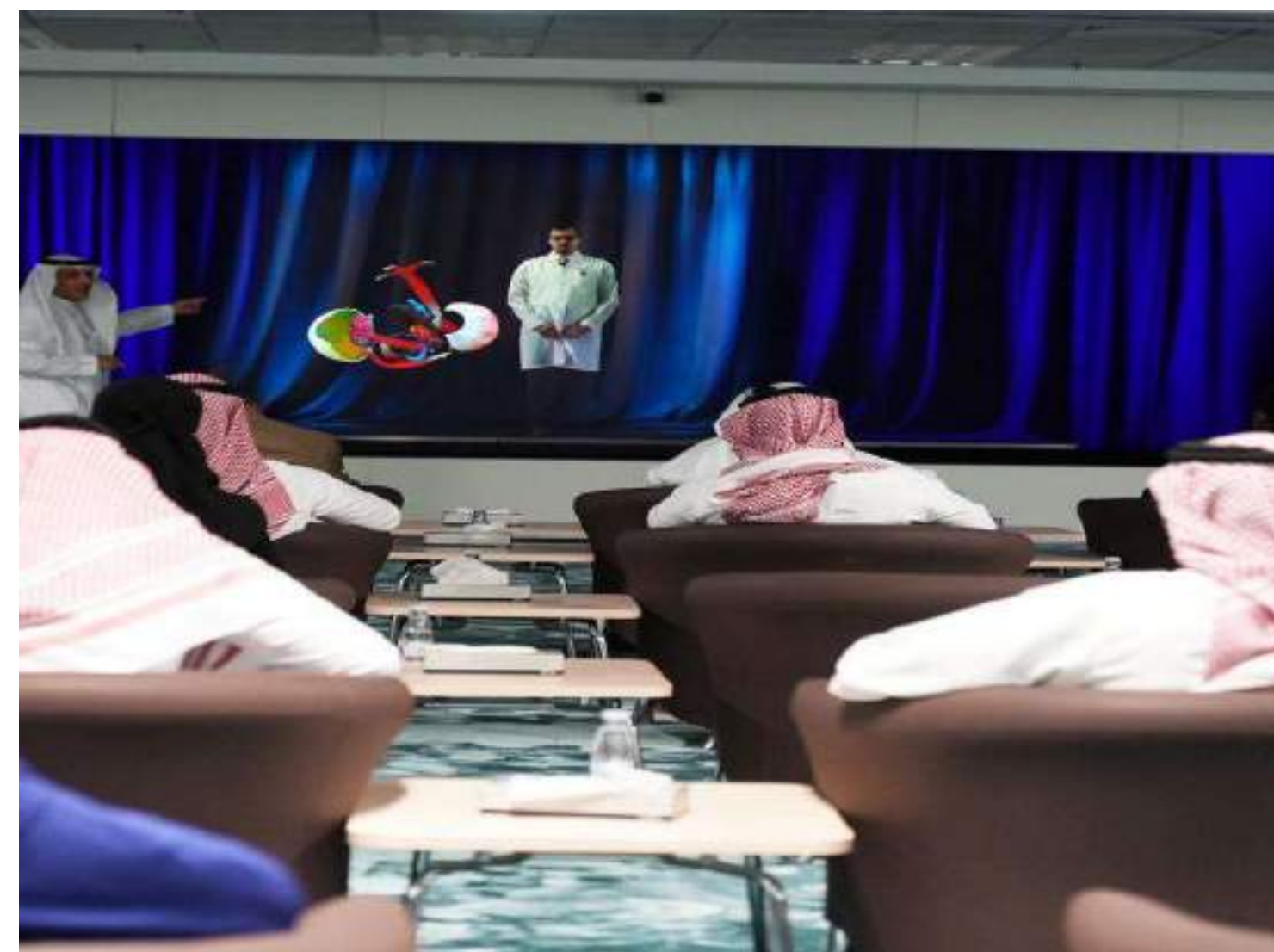
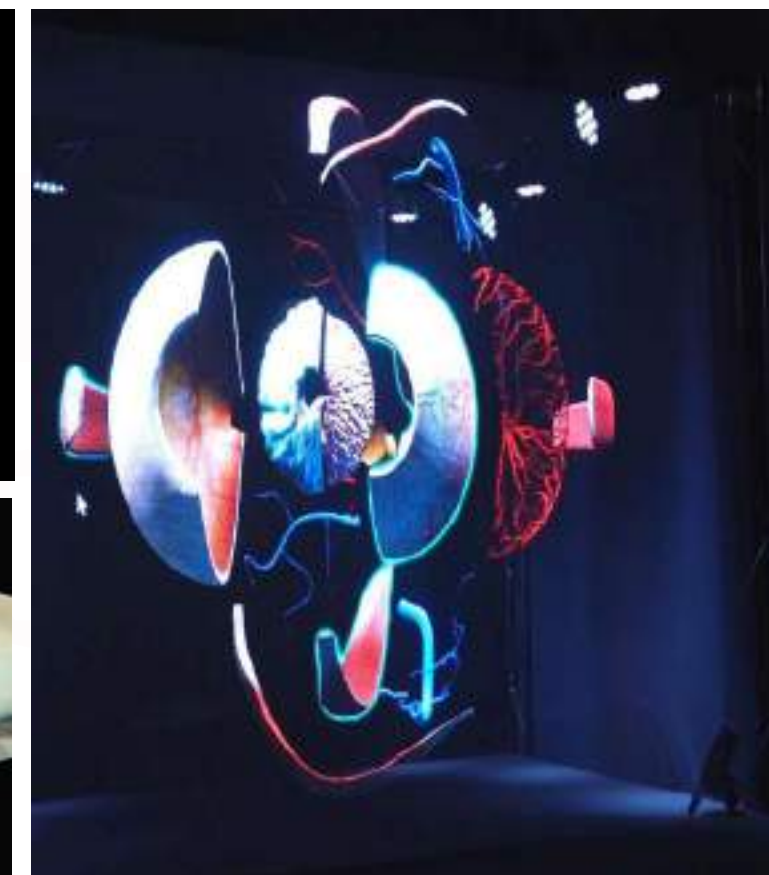
Hamasat Culture Center



GOAL #4

QUALITY EDUCATION

KFU invested in using technology to deliver high quality education. E-learning and distance education infrastructure in KFU prompted sustainability through delivering KFU educational services all over KSA areas including rural areas. KFU works extensively in using the state-of arts technologies such as hologram technologies and provides its stake holders with the needed technologies that support quality of teaching and learning activities.

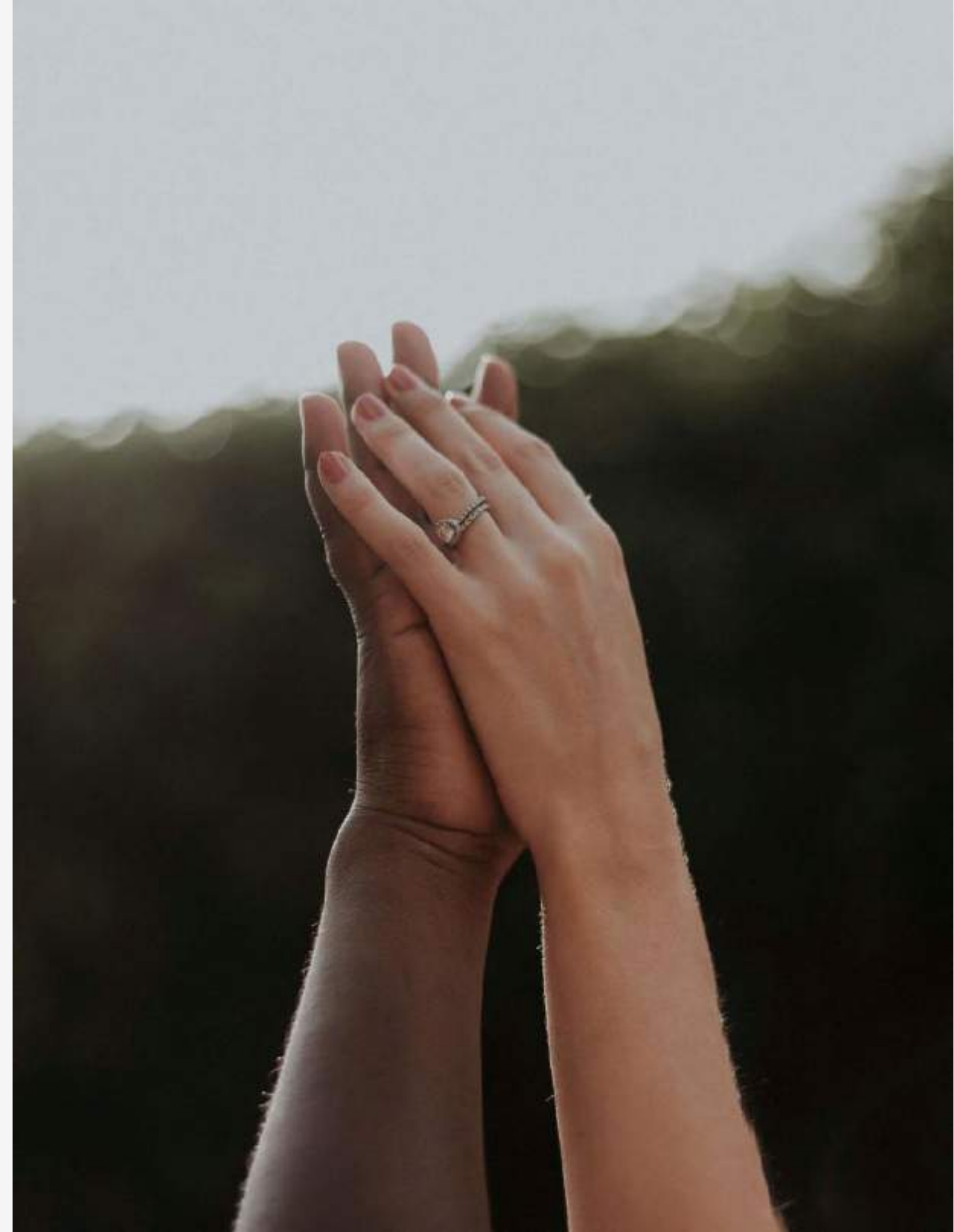




GOAL #5

GENDER EQUALITY

Achieve **gender equality** and
empower all **women** and **girls**





GOAL #5 GENDER EQUALITY

G
E

KFU is keen to achieve gender balance and equal opportunities in all aspects such as employment, admission, and training. One of the major focuses for the past few years was to pay more attention to enhancing the role of women in appointments, administrative positions and representation in higher committees and councils to ensure an appropriate gender balance. During its inception, KFU university has established a unit that aims to contribute to the development and enhancement of women's capabilities, "Women Development Unit". The unit provides support and assistance services for women inside the university as well as to the local community through several activities. It also organizes training programs, events, seminars in areas that are related to women. The unit services female students, staff, and women in the local community.

The university provides various types of support to enable women and students to complete their studies, such as housing, food, transportation services, guidance and Counseling Unit and the student fund program.

The university is committed to apply the executive regulations regarding human resources and civil service and work system, in which many provisions s allow women to obtain special leaves related to (baby care leave, breastfeeding leave, death leave)





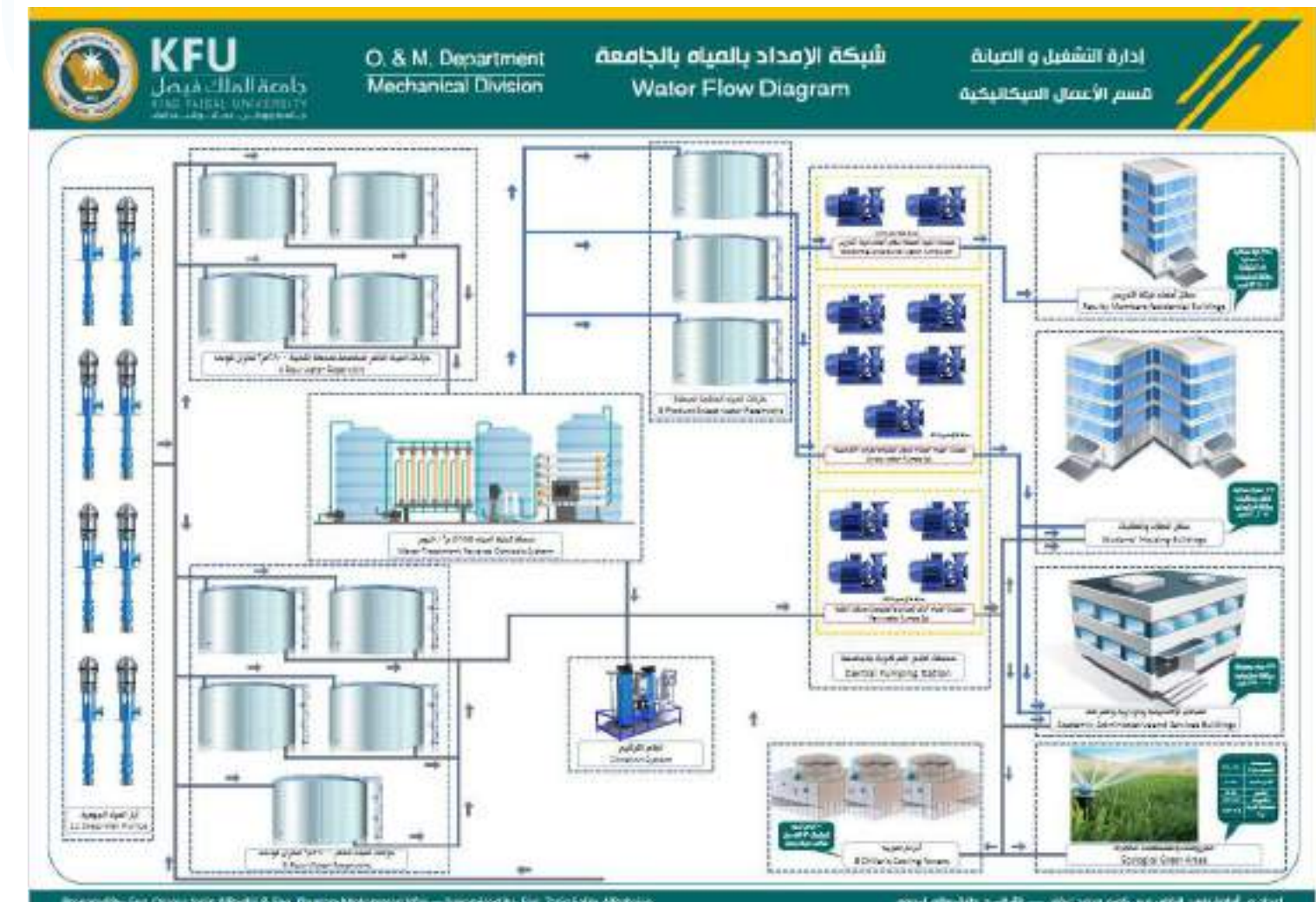
GOAL #6

CLEAN WATER AND SANITATION

Ensure availability and **Sustainable**
management of **water** and sanitation for all



King Faisal University works to preserve water resources, since water resources in the Kingdom are scarce. In 1980, a center for water studies was established at the university. It is one of the research centers specialized in conducting research related to water resources in terms of sources, quantity and type, and providing consultations and training courses. KFU adopted policies on preserving water resources in an effective and efficient manner. The university also promotes the rationalization use of water on its campus. The university works to treat all wastewater and use the treated water for irrigation and other uses other than drinking water. The university also provides free drinking water to all its members.



KFU in cooperation with the Ministry of Environment, Water and Agriculture has demonstrated through tangible projects its capability of solving water problem issues not only in Al-Ahsa region, but also at the Kingdom level. Among these projects were initiatives that aimed to spreading best practices and clean agricultural methods, such as organic agriculture and other initiative related to vertical agriculture. One of the projects is the vertical farming in the Kingdom. Vertical farming has shown to have some major benefits. There are several advantages of vertical farming include the year-round crop production, minimizing the use of water in cultivation, and increasing the production of organic crops. Vertical farming is just an example for the projects that KFU, through its identity, contributed to the Kingdom and consequently the entire world. Those efforts have ultimately led to a sustainable agricultural sector that achieves optimal exploitation of natural resources and hence improve people’s lives.

The University’s Operations and Maintenance Department monitors the amounts of water produced from the 22 Wells in the university. The university also has five raw water desalination stations and three wastewater treatment stations equipped with flow meters to measure the total volume of daily water used in the university.

The university provide free drinking water supplies in the campus, like water coolers, fountains and/or bottled water.





GOAL #7

AFFORDABLE AND CLEAN ENERGY

Ensure access to affordable, reliable,
sustainable and modern energy **for all**



7

AFFORDABLE AND
CLEAN ENERGY**GOAL #7**AFFORDABLE
AND CLEAN ENERGY

The university's contribution to pollution and climate change, as the university contributes to the formation of sustainable societies through various practices and activities, as well as commitment to sustainable environmental policies. This can be seen through the support provided for the transition and use of renewable energy, the use of clean means of transportation within the campus (electric cars), the practices of saving electric energy through various policies implemented in the university from the use of optical/kinetic sensors, the replacement of lighting lamps to lamps with low consumption (LED), and encouraging university employees to rationalize the use of energy.

7 AFFORDABLE AND CLEAN ENERGY



GOAL #7

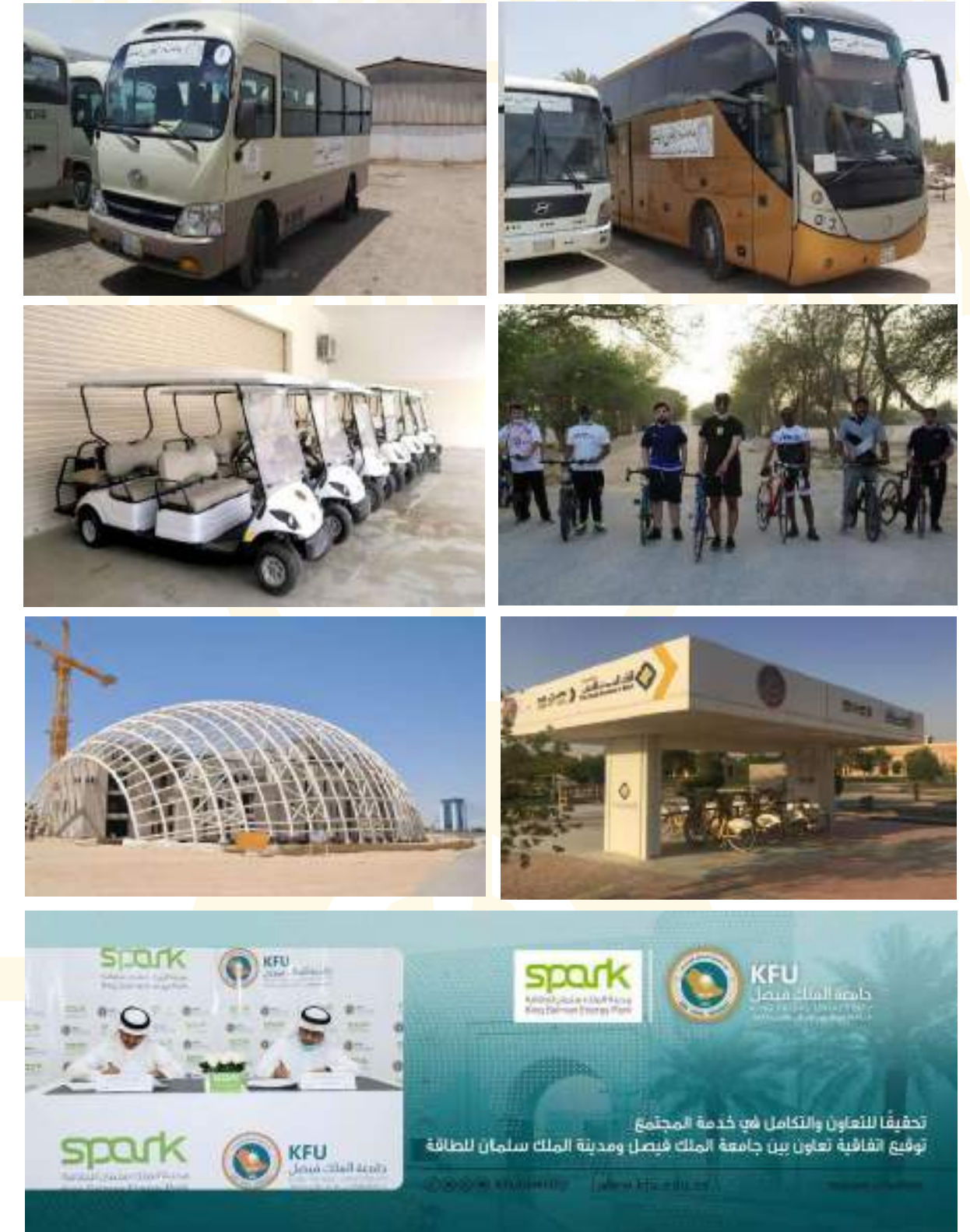
AFFORDABLE
AND CLEAN ENERGY

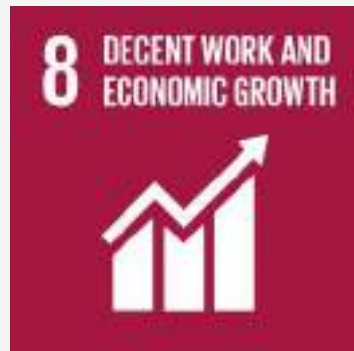
King Faisal University applies Building Management Systems (BMSs) to achieve higher energy efficiency.

KFU is committed to achieving the sustainability through projects and initiatives. One of the main projects in the KFU's strategic plan 2020-2024 is "Maximizing the environmental impact of the university campus". This project aims to enhance a sustainable environmental development of the University Campus and make it a model for reducing carbon emissions.

The university also provides a transportation services for employees and students, "free Buses services" to lessen the number of cars and hence reduce carbon dioxide emissions. in addition, the university has had a collaboration with the Saudi Investment Bank to provide free bicycles.

The Research and Consultation Institute of KFU provides expertise and scientific consultancies to serve the community. KFU provides a study to the Ministry of Energy, Industry and Mineral Resources on the storage of renewable energy in the Kingdom





GOAL #8

DECENT WORK AND ECONOMIC GROWTH

Promote sustained, inclusive and
sustainable economic growth, full and
productive employment and decent work **for all**



8 DECENT WORK AND ECONOMIC GROWTH

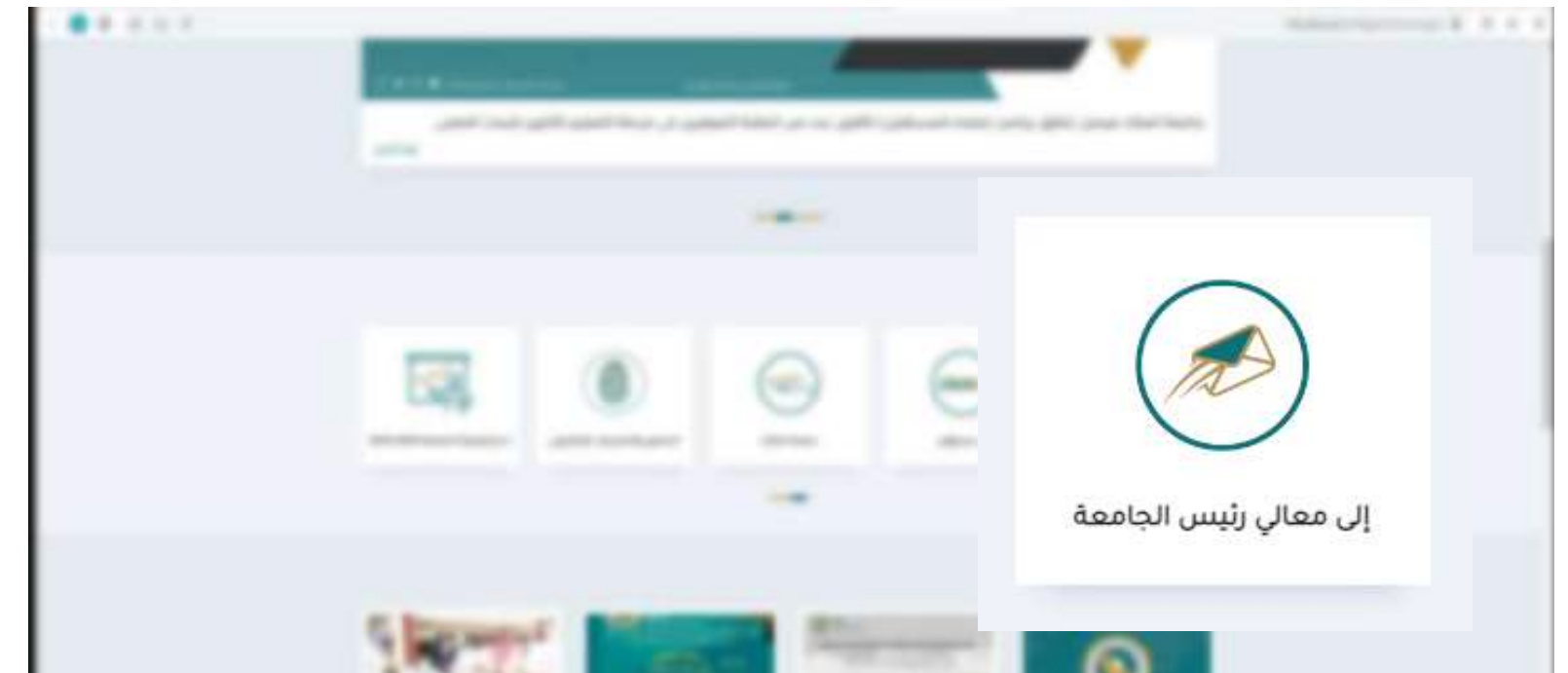


GOAL #8 DECENT WORK AND ECONOMIC GROWTH

King Faisal University is keen to apply the best institutional management practices. This includes equivalent payment for women and men, equivalent teaching load for academic staff, equivalent job opportunities and secured contracts. In order to satisfy its employees and so that there is no room for a sense of unfairness within the university, the university has launched an electronic system “To KFU President” in the main page of the university website. All university staff, employees, and students can file any complaint directly to the President of the university to take the necessary action regarding it.

8

DECENT WORK AND ECONOMIC GROWTH





GOAL #9

INDUSTRY, INNOVATION AND INFRASTRUCTURE

Build resilient infrastructure, promote inclusive and **sustainable** industrialization and foster innovation

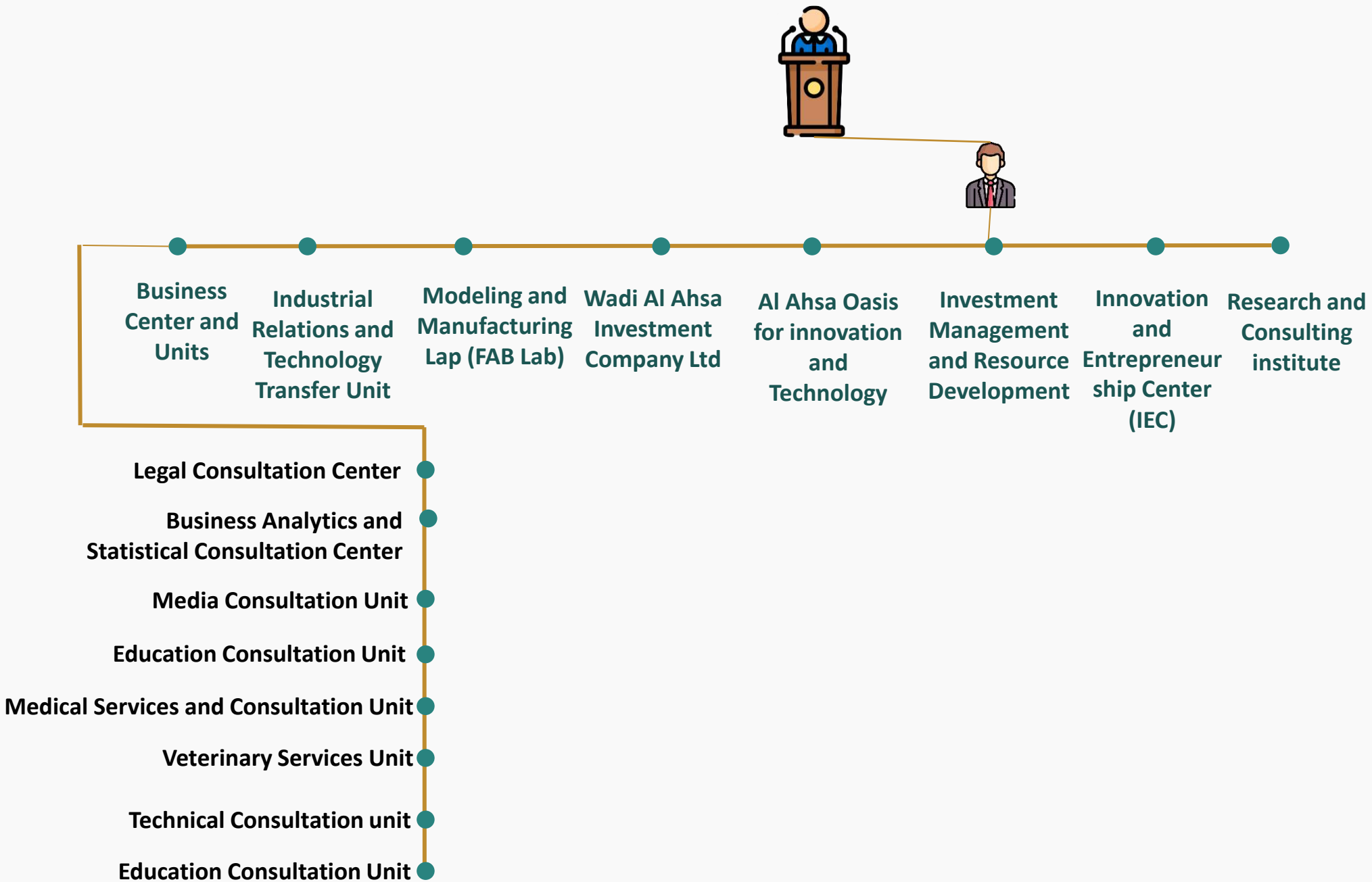


King Faisal University has directed its compass towards empowering its economic potentials and designing investment vision & systems that eventually accelerate its future. This direction has resulted in establishing a newly promising Innovation and Business Development Sector at the beginning of 2020. The new sector is set to be the university’s fifth sector in addition to its functional sectors, represented in the Academic Affairs Sector, the Research Sector, the Community Engagement Sector, and the Administrative and Financial Sector.

The establishment of the new sector is viewed as an initiative made by the university's leadership team to ensure the realization of its vision through:

- Diversifying the University’s income resources.
- Attaining a high level of financial sustainability for the University.
- Investing in knowledge, research, science and technology.
- Appreciating the economic value of the University's assets and capabilities.

In addition to its general goals, the establishment of the Innovation and Business Development Sector has directly influenced the way in which people think, facilitated their inspiration, ideation, and implementation capabilities, as well as, creating a culture of open innovation within the university, by engaging students, faculty members, administrative leaders, and suppliers and experts in the process of innovation and business development. It also assists in building the capacity of **KFU's** people in utilizing methodologies that can support the development of enterprise, consult and master innovation processes as well as equipping them with the necessary skills to lead business and corporate projects.





GOAL #10

REDUCED INEQUALITIES

Reduce inequality within and among countries



Impact

KFU has taken great care and efforts to confront social and cultural biases and ensure balance. The university worked to adopt the principle against social discrimination and paid special attention to supporting development policies that remove any obstacles for underrepresented groups.

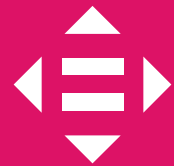
KFU has specifically sought to ensure equal opportunities and fair treatment in:

- Admitting students with disabilities and to prevent any form of exclusion or discrimination based on disability. It paid great attention to this category of society by establishing a special unit for them to provide them with the needed support.
- Accepting more international students. As the university believes in the right of education for all, it has worked to provide a free education opportunities for international students.
- Admitting more students from single parent families or raised in shelters.
- Tracking female students admission till it reached **64%** in 2020.
- Taking special care of students with chronic diseases, cancer patients, and kidney failure.

Overall, the university made effective contributions to the advancement of society and the elimination of discrimination.

10 REDUCED INEQUALITIES

10 REDUCED INEQUALITIES



GOAL #10

REDUCED INEQUALITIES



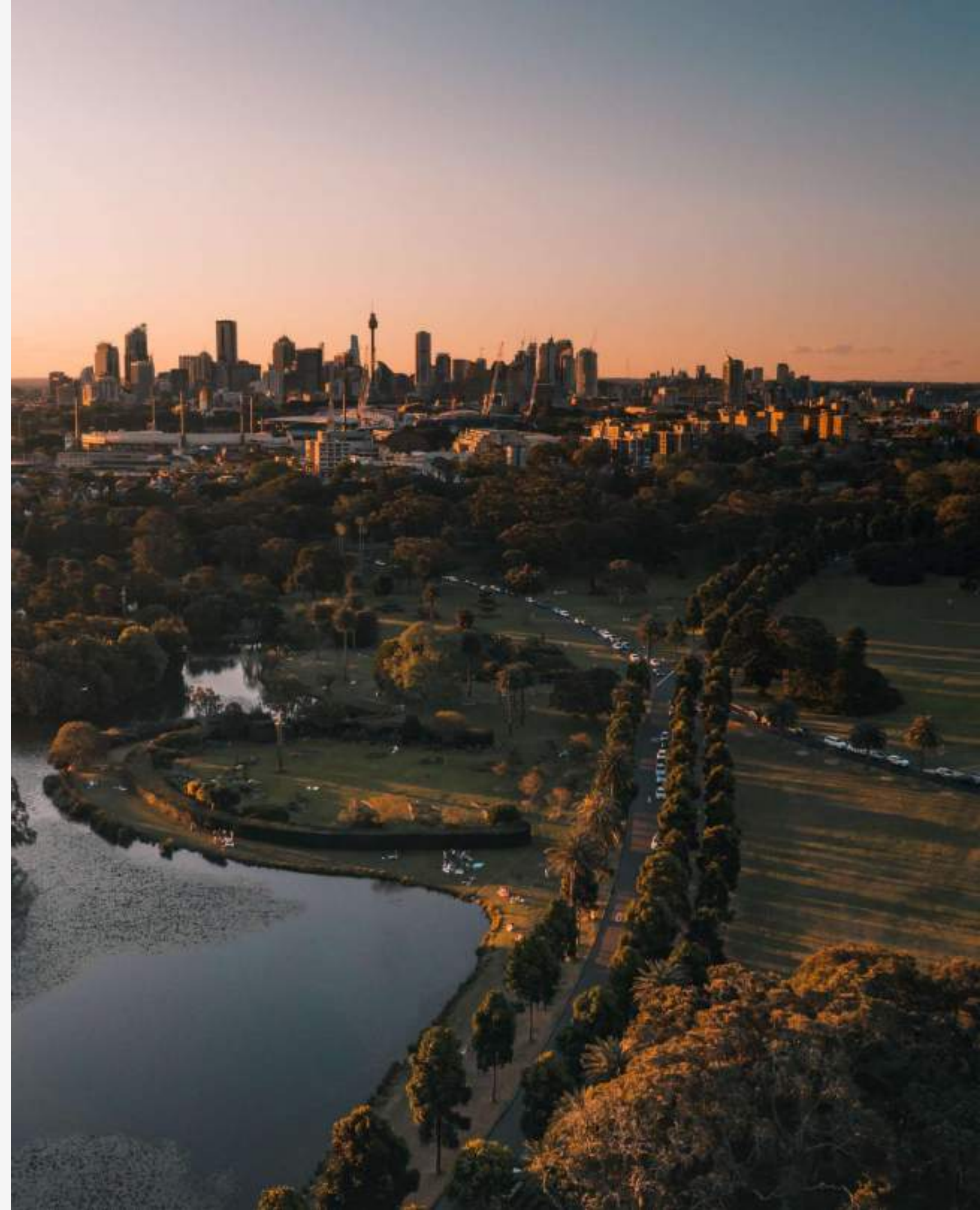
KFU provides support services for people with disabilities. First link represents an online page for the disability support unit at KFU. All services and support provided is listed including social, educational, and financial support. Second attachment shows last year's plan of the unit



GOAL #11

SUSTAINABLE CITIES AND COMMUNITIES

Make Cities and Human Settlements Inclusive,
Safe, Resilient and Sustainable



KFU is committed to achieving the sustainability through the projects and initiatives. One of the main projects in the KFU's strategic plan 2020-2024 is "Maximizing the environmental impact of the university campus". This project aims to enhance a sustainable environmental development of the University Campus and make it a model for reducing carbon emissions, water consumption and energy consumption in particular and a model for environmental sustainability in general. It also aims to maximizing the community utilization from the university's facilities and services. This will be achieved through several initiatives that the university has already started such as projects that are related to increasing the vegetation, decreasing water and energy consumptions, and environmental friendly buildings inside the university campus.

KFU is keen to achieve sustainability through motivating sustainable practices around the campus. several events and activities related to sustainable are organized weekly. Students and staff are encouraged to participate in those activities. The university also spreads awareness of sustainability through motivating messages and flyers.

KFU provides public access to its buildings and important landmarks, including school students' visits. Public can access and benefit from the university library. Moreover public can use the university sidewalk to do exercise or bike.

The Central University Library opens its door for all university staff as well as the local community all the week days, morning or evening, to benefit from the library's capabilities including books and publications



The Central University Library opens its door for all categories of university faculty and the local community throughout the week, morning or evening, to benefit from the library's capabilities including books and publications



عمادة شؤون الطلاب تستقبل أكثر من (260) طالبًا زائرًا من مدارس التعليم خلال الفصل الدراسي الأول

11 SUSTAINABLE CITIES AND COMMUNITIES



GOAL #11

SUSTAINABLE CITIES AND COMMUNITIES

[Link1:](#) The university holds a number of exhibitions, museums and artworks, including the Shifra exhibition.

The university provides free public access to open spaces and green spaces, including the university sidewalk.

The university participates in a number of events related to local arts and the annual public performances of university troupes, theater groups and orchestras, including the competition for the best national operetta script for university students and Technical Olympiad for university students

KFU sets targets for more sustainable transportation and decreasing the number of vehicle entering the campus. KFU has a whole department for traffic that provides totally free more sustainable transportations such as buses and bicycles.

The university cooperates with the authorities and the local community to address development and planning issues, including the program to prepare the mothers of orphans scientifically, socially and educationally to be able to take care of their children and raise them in distinct ways



LE CITY
UNIT

11 SUSTAINABLE CITIES
AND COMMUNITIES



GOAL #11
SUSTAINABLE CITIES
AND COMMUNITIES

11 SUSTAINABLE CITIES AND COMMUNITIES

11 SUSTAINABLE CITIES
AND COMMUNITIES



GOAL #11

SUSTAINABLE CITIES
AND COMMUNITIES

The National Research Center for Giftedness and Creativity

This building is designed according to the latest
environmental building standards to obtain Green
Building Certification “LEED”



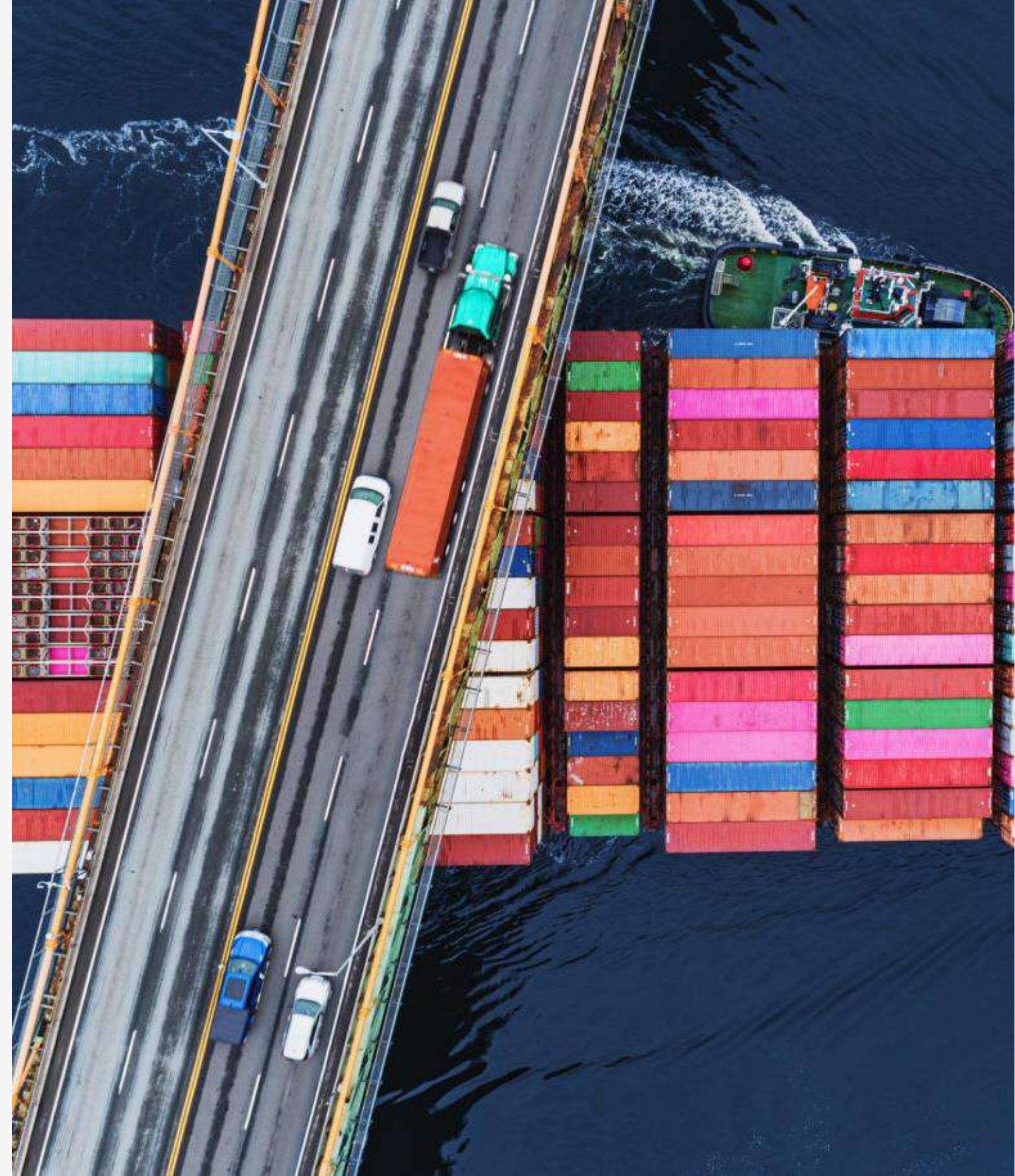
مبنى المركز الوطني للموهبة والإبداع ومعهد البحوث



GOAL #12

RESPONSIBLE CONSUMPTION AND PRODUCTION

Ensure **Sustainable** Consumption
and Production Patterns





GOAL #12
RESPONSIBLE
CONSUMPTION AND
PRODUCTION

Based on its pioneering role and societal responsibility in raising environmental awareness in the community and limiting the expected damage to the environment from various industrial and community activities, KFU has established a new unit “The Environmental Protection Unit”. Because of its role in community services and increased environmental interaction with a wide range of community segments, including industrial cities, this unit aims to safeguard and preserve natural resources while fostering sustainable development in order to protect the environment. The unit has recently licensed as a house of expertise by the National Center for Monitoring Environmental Compliance, Saudi Arabia.

In coordination with other university departments, the unit undertakes the followings:

- To protect the environment at the university and work to consolidate the slogan of the Green University, in word and deed, within the university city and its affiliated facilities.
- To meet the requirements of the General Authority for Meteorology and Environmental Protection.
- To work with the relevant authorities at the university on the management and disposal of medical waste, animal waste, recycling, and reducing plastic use using the methods approved by the General Authority for Meteorology and Environmental Protection.
- To spread awareness of environmental friendly production and consumption around the university campus through educational lectures, activities, and training programs.



Another Sample of Organic Waste Treatment at the chicken slaughtering and waste handling unit



SHAREK

KFU has developed an intensive program, which allows a separation of all types recyclables (plastic, paper, glass, aluminum). The small boxes of recycling are available inside and outside each building. The big cartoon and plastic stuff are also separated in big containers as shown above and they collected by a contracted company. The contract between KFU and our partner of service “Saraco” was amended to ensure that the recycle program is impended in order to ensure sustainability and save the environment.

KFU automates the university procedures and correspondences by using an automated system "Sharek". This system has a positive impact on rationalizing the consumption of paper and achieving sustainability.



GOAL #12
RESPONSIBLE
CONSUMPTION AND
PRODUCTION



GOAL #13

CLIMATE ACTION

Take **urgent action** to combat climate change and its impacts



12 CLIMATE

Under the **KFU** Strategic Plan 2020-2024, the project “Maximizing the environmental impact of the campus “ is developed considering different environmental indicators, administration as well as associated stakeholders including students, faculty members and staff. The project is a part of overall plan starting with the commitment of the stakeholders of King Faisal University, and developing policy and guidelines, and implementing of these guidelines. One of the key pillars of this project is eco -friendly energy related initiatives.

Within this project a model has been made for reducing carbon emissions and carbon emissions energy consumption in particular, and environmental sustainability in general.

KFU is a key partner in the Saudi Green Initiative, which will be Saudi Arabia as a whole and King Faisal University in zero carbon neutrality in 2060

KFU covers around a (4.8 Million m2) of land. To provide a conventional electric system of fence lighting for the whole perimeter, it requires high cost and resources. Instead, a renewable resource of energy has been implemented in the campus. The solar lighting system for the perimeter produces a capacity of 50kw with each solar fence LED fixtures of 8w.



13 CLIMATE ACTION



GOAL #13
CLIMATE ACTION

The Environmental Protection Unit at the university cooperates with several government agencies and other regional and international bodies in order to plan and implement proper environmental protection programs and control operations.

In cooperation with the Ministry of Environment, Water, and Agriculture, KFU organized a scientific session entitled "Scientific Research and the Green Saudi Initiative" that discussed several themes:

the role of the National Center for the development of vegetation cover and combating desertification in supporting scientific research, sustainable energy and renewable energy, green management, carbon emissions, how to manage, recycle and convert solid waste into energy and environmental sustainability, and about tissue culture technology and its important role in achieving food security and environmental sustainability.

Many agreements have been made among and **between King Faisal University** and GOs and NGOs in the field of supporting scientific research and exchanging experiences and studies in the fields of modern technologies for agricultural projects and exchanging advisory services and scientific advice to studying and creating new financing products that contribute to achieving food security as well as agricultural and rural development



13 CLIMATE ACTION



GOAL #13
CLIMATE ACTION



GOAL #14

LIFE BELOW WATER

Conserve and **sustainably** use the oceans, seas and marine resources for **sustainable development**



Under the **KFU** Strategic Plan 2020-2024, the project “Maximizing the environmental impact of the campus “is developed considering different environmental indicators, administration, as well as associated stakeholders including students, faculty members and staff. The project is a part of overall plan starting with the commitment of the stakeholders of King Faisal University, and developing policy and guidelines, and implementing of these guidelines. One of the key pillars of this project is protection of ecosystem related initiatives.

Several centers and units at the university plays a prominent role in research, studies and practical consultations in the areas of exploitation, management and development of living aquatic resources, whether from natural fisheries or through fish farming.



**KFU**
جامعة الملك فيصل
KING FAISAL UNIVERSITY
جامعة وطن... علم... وابتكار



الاستزراع السمكي

أخي صاحب أو مدير مزارع الاستزراع السمكي يسعد الوحدة من خلال خبراتها في مجال الثروة السمكية والاقتصاد والدرشاد الزراعي أن تقدم لكم الخدمات التالية:



تنفيذ برامج تدريبية متخصصة وفق احتياجات مشروعات الثروة السمكية



تصميم وتشغيل مشروعات الثروة السمكية



عمل دراسات الجدوى لمشاريع الثروة السمكية الجديدة



الإشراف على المشاريع القائمة

شركاء من أجل تحقيق الأمن الغذائي والاستدامة البيئية

« نُسعد بالتعاون معكم »



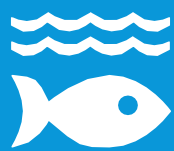
@b_c_u_k_f_u
SBC@kfu.edu.sa
هاتف / 0135898553

وحدة الاستشارات والخدمات الزراعية
acu@kfu.edu.sa
واتس / 0568476991



الأعمال
Business Unit
www.kfu.edu.sa

14 LIFE BELOW WATER



GOAL #14
LIFE BELOW WATER

KFU organized many events and initiatives to the Kingdom of Saudi Arabia to conserve marine life for Preserving the Kingdom's Biodiversity.

KFU seeks to use all food served on campus, including fish, must be from natural, fresh and sustainable source.

The Civil Engineering Program at King Faisal University, which is part of the Department of Civil and Environmental Engineering in several fields: construction, geotechnical engineering, transportation engineering, water and environment and construction management.

The Center of Fisheries Research at the university plays a prominent role in research, studies and practical consultations in the areas of exploitation, management and development of living aquatic resources, whether from natural fisheries or through fish farming.

The center also works to raise the efficiency of those enrolled in it from individuals interested in fisheries affairs and students studying at King Faisal University and to increase communication and cooperation with the private sector through the establishment of technical courses and workshops.

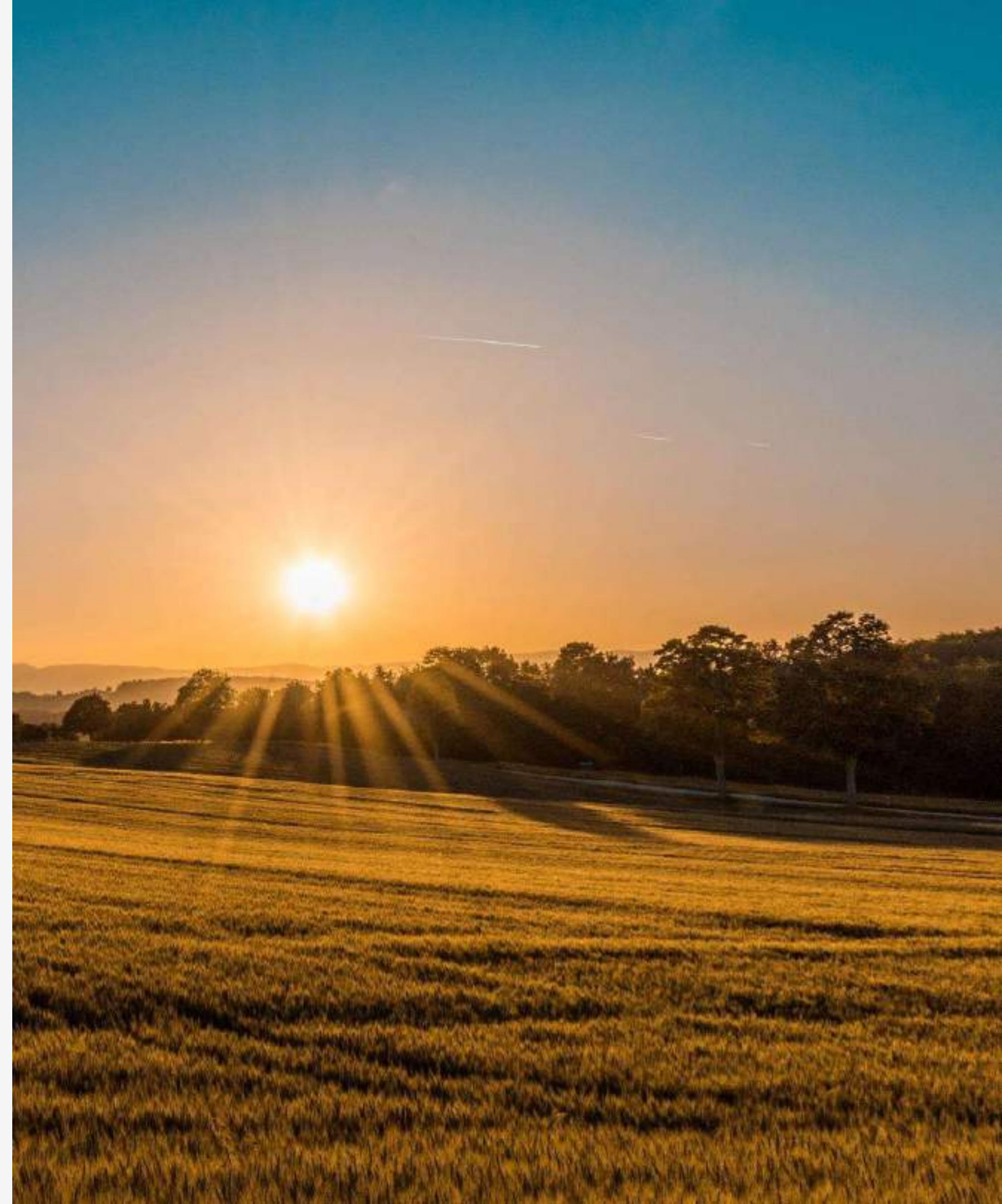




GOAL #15

LIFE ON LAND

Protect, restore and promote **sustainable** use of terrestrial ecosystems, **sustainably manage** forests, combat desertification, and halt and reverse land degradation and halt biodiversity loss



Under the KFU Strategic Plan 2020-2024, the project “Maximizing the environmental impact of the campus “ is developed considering different environmental indicators. Several initiatives has already been implemented to achieve the objectives of this project. In terms of the land sensitive waste disposal, the university has the followings:

A program that allows a separation of all types of recyclables (plastic, paper, glass, aluminum) by specific containers. These containers are available inside and outside buildings. Then they collected by a contracted company as shown in the pictures.

A program for treating organic waste. For example, the parts of grass and trees are collected by a company and are sent to a government recycle program to produce organic fertilizers.

A program for inorganic waste from our campus to government waste plant. The WEEE (Waste Electrical and Electronic Equipment) are also gathered separately and recycled.

A management program for (solid/liquid/gaseous) hazardous waste that is directed by a service company in collaboration with the colleges of Science and Medicines.

An advanced wastewater treatment plant that is designed to treat sewage water. The produced water will be used for many irrigation needs, thus greatly reducing potable water demand for the University.

Engagement:

The cooperation of the National Center for the Development of Wildlife at King Faisal University and the Prince Saud Al-Faisal Center for Wildlife Research in Taif to propagate the Saudi Mushroom under threat.



مركز أبحاث الطيور في ضيافة مركز الأمير سعود الفيصل للأبحاث القطرية

The Center OF Avian research at King Faisal University contributes to preserving the Al-Asfar Lake Reserve in Al-Ahsa, which harbors migratory birds.



مركز أبحاث الطيور يساهم في تقرير / بحيرة الأصفر بالاحساء.. محمية طبيعية تأوي الطيور المهاجرة إليها

15 LIFE ON LAND



GOAL #15
LIFE BELOW WATER



GOAL #16

PEACE, JUSTICE AND STRONG INSTITUTION

Promote **peaceful** and inclusive societies for **sustainable** development, provide access to justice for all and build effective, accountable and inclusive institutions at all levels



16 PEACE, JUSTICE

KFU has several Houses of Expertise that provide advice to local, regional, and national governments. One of the centers that KFU has recently established is the Center for Legal Studies, Consultations, and Arbitration Services. This center provide a variety of services inside and outside the university campus. These services include: providing legal advice and amicable settlement of disputes, Arbitration in various cases, Conducting legal studies and research for ordinary people as well as legal authorities and individuals, government and private agencies, and national and foreign organizations. The center Prepares and studies various laws, legislation, regulations, decisions and resolutions, in addition to drafting and reviewing contracts, organizing study courses and training programs to suit the needs of ordinary and legal individuals, Providing professional training services for practicing the legal profession, training and development of legal skills for lawyers, legal advisors and workers in legal administrations

مشاريع المعهد

من أهم المشاريع:



16 PEACE, JUSTICE
AND STRONG
INSTITUTIONS



GOAL #16

PEACE, JUSTICE
AND STRONG INSTITUTION



GOAL #17

PARTNERSHIPS FOR THE GOALS

Strengthen the means of **implementation** and revitalize the global partnership for **sustainable development**



The university seeks to achieve its institutional identity in food security and sustainable development by harnessing all its sectors that are interested in sustainability and SDGs, such as the College of Agriculture and Food Science, College of Veterinary Medicine, Research Centers of Fish, Center of Water Studies, Center of Avian Research, and the Environmental Protection Unit

KFU seeks to benefit from and sharing experiences with regional and international prestigious partners, in a way that contributes to achieving the United Nations sustainable development goals. From this standpoint, the university has worked to strengthen its international partnerships aimed at achieving development goals. For example, KFU has an ongoing project with Wageningen University that aims to improve agricultural practices. **KFU** also has a **collaboration** with the University of Queensland, Australia, for the future of Jojoba. The characteristics of Jojoba provides a rich platform for interactions, industrial projects that support several SDGs directly.



The university organized the Carbon Dioxide Mitigation Techniques conference as part of a package of initiatives and activities of (Green Saudi Arabia) to seek the university's role in achieving the goals of sustainable development.

This conference discussed several subjects :

Enabling clean energy sources to achieve the objectives of the Green Saudi Initiative, Techniques to reduce carbon dioxide emissions and The use of sulfur for environmental impact assessment and energy demand in reclaimed asphalt pavements.



معالي رئيس الجامعة يرعى أعمال ملتقى تقنيات تخفيف ثاني أكسيد الكربون

KFU contributes to international collaboration on measuring data for the SDGs through participating in sustainability related awards such as **Green Gown Awards** where King Faiza University was nominated in the international final list in the “Sustainable Enterprise” category within the 2021 Green Gown Awards





KFU
جامعة الملك فيصل
KING FAISAL UNIVERSITY
University and a Nation..Prosperity...Sustainability